

EASY TO REMANUFACTURE CARTRIDGES THAT YOU SHOULD BE REMANUFACTURING - PART 1



DELL 1320CN



DELL 3100CN



DELL 5100CN



DELL 5110CN



KYOCERA TK-112



KYOCERA TK-332



OKIDATA B2200



OKIDATA C3400



OKIDATA C5100



OKIDATA C7300



OKIDATA C9300



OKIDATA C9600



PANASONIC KX-FA85



RICOH CL3500 (TYPE 165)



RICOH CL4000 (TYPE 145)



SAMSUNG CLP-300



XEROX PHASER 6250



XEROX PHASER 7700

EASY TO REMANUFACTURE CARTRIDGES THAT YOU SHOULD BE REMANUFACTURING - PART 1

By the Technical Staff at UniNet

This is the first in a series on easy to do color and monochrome cartridges you may be passing up but shouldn't be. They represent the best profit opportunities currently in our industry. These cartridges are all very simple, and with a good majority of them there is nothing to test! Training is minimal and in all cases the time needed to do them is very small. For the purposes of these articles, we will not be going in depth but to be honest there really is no need. Some use chips while some do not. Some have waste chambers and others are purely a supply hopper. All of this will be covered. So far on the list are cartridges made by Dell, Samsung, Lexmark, Kyocera, Ricoh, and Xerox. There are quite a few from each manufacturer so this series will contain a lot of information.



DELL 1320CN

The Dell 1320CN cartridges are rated for 2000 pages. The OEM numbers are 310-9058 HY Black, 310-9060 HY Cyan, 310-9064 HY Magenta, and 310-9062 Yellow. There is a chip that must be replaced every cycle.



1. Remove the black tape from the seam of the supply hopper and the waste chamber. Save the tape for use when re-assembling the cartridge.



2. Press in on the two tabs of one side as shown to release the waste chamber. It is sometimes helpful to press back on the waste chamber as the tabs are pressed in.



3. Remove the supply hopper cover.

Clean out any remaining toner from both chambers.



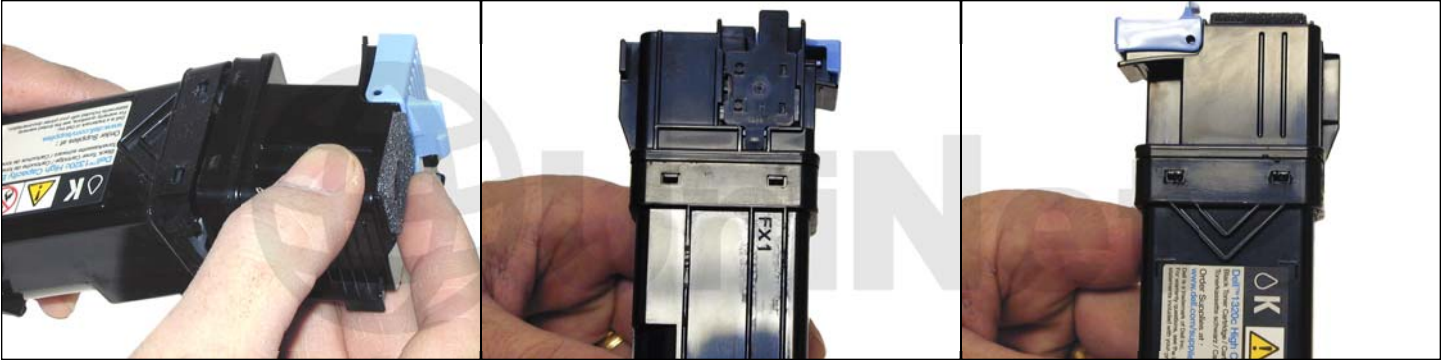
4. Fill the hopper with the appropriate color toner. Remember, while the cartridges all look the same, they are not interchangeable. Each color has a different set of plastic tabs.



5. Clean the plastic lip where the hopper cover sits of any toner.

Replace the cover.



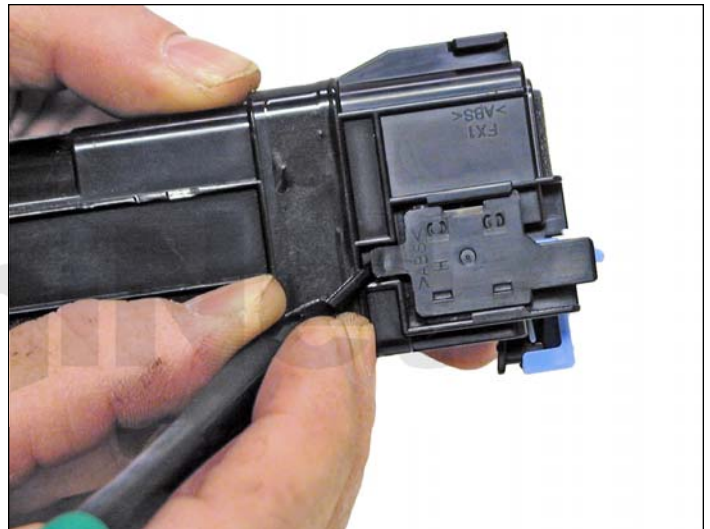


6. Install the waste chamber on to the supply hopper.

Make sure all four tabs are locked in place.



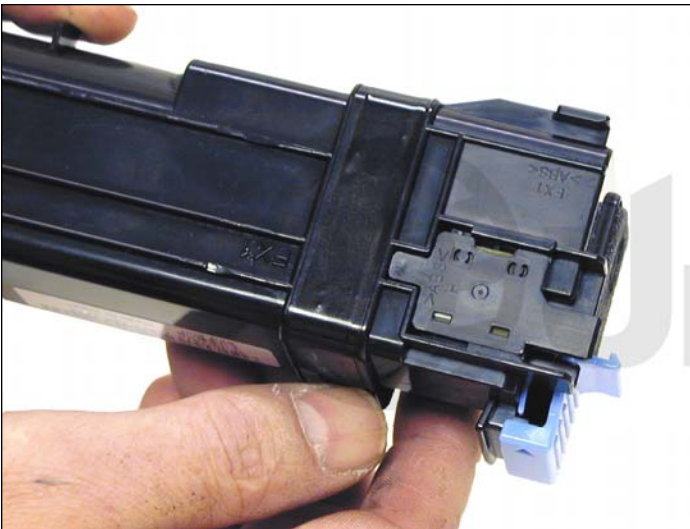
7. Re-install the black tape seal across the seam. If the OEM tape is not useable, good black rubber electrical tape (NOT the vinyl type) will work fine (toner will stick to anything made from vinyl).



8. Carefully pry up the plastic chip holder tab.



9. Slide the holder out of the cartridge and replace the chip.



10. Slide the holder back in place until the tab locks in place.



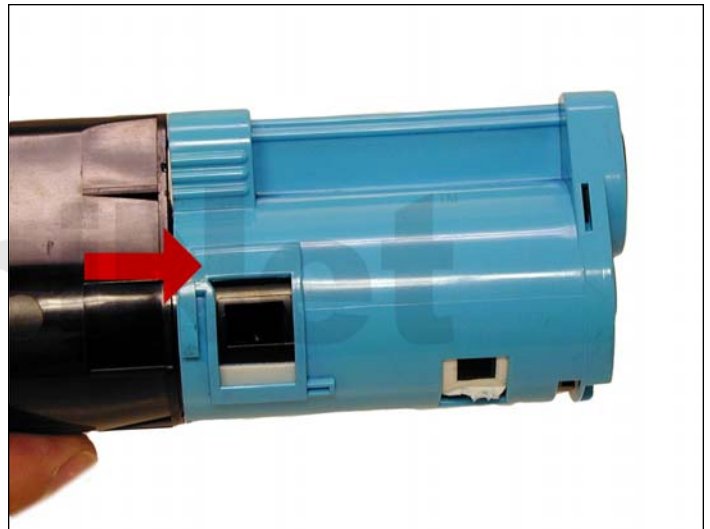
DELL 3100CN

The Dell 3100CN cartridges are rated for 4000 pages. The OEM numbers are 310-5726 Black, 310-5731 Cyan, 310-5730 Magenta, and 310-5729 Yellow. There is a chip that must be replaced every cycle. It is very important to note that new developer must be mixed in the bottle of toner before pouring the toner in the tube.

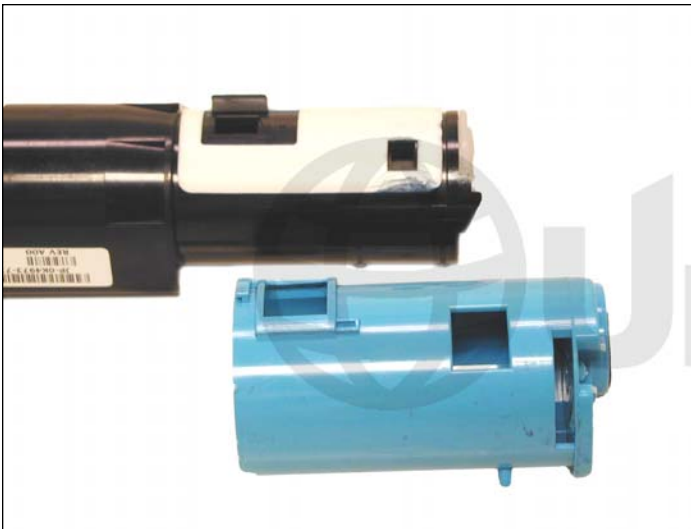


1. Lift up on the tab on the colored handle as shown.

Turn the handle to open access to the ports.



2. Note the foam stopper as indicated by the purple arrow (left photo). The higher plastic part indicated by the red arrow shows an area that will fit over the stopper. Turn the colored handle so the high part is over the stopper (right photo).



3. Remove the colored handle.



4. Remove the fill plug on the end of the cartridge.

Clean out all the waste developer.



5. Take a screwdriver and insert it through the toner port. Press against the inner fill plug. Remove the plug. Clean out all the remaining toner.

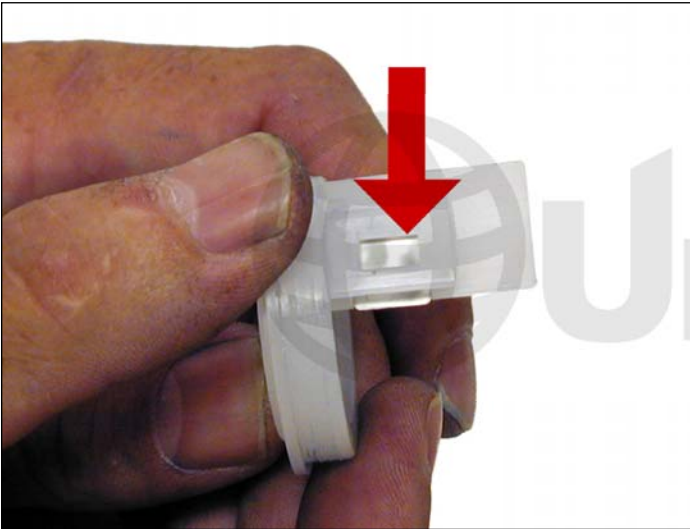


6. Add the carrier to the toner bottle and shake well.

Pour the toner/developer mix into the tube.

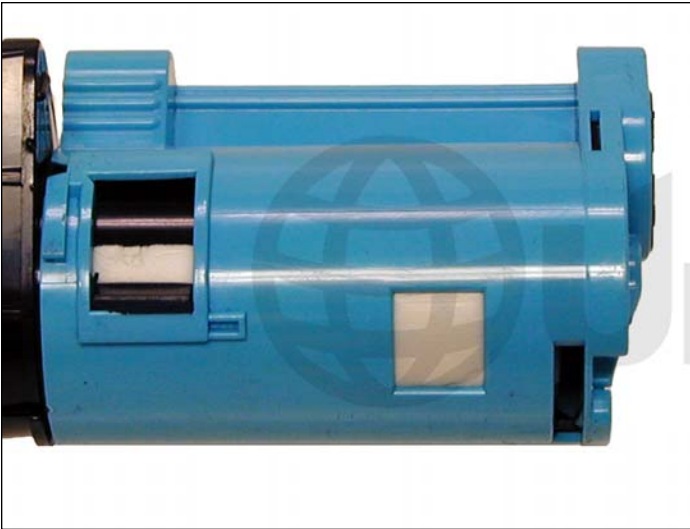


7. Install the toner fill plug.



8. Install the developer waste plug. Make sure the window and metal plate on the plug are clean.

Make sure that the plug window is aligned with the cartridge window when installed (right photo).



9. Install the colored handle.

Turn so the toner ports are closed.

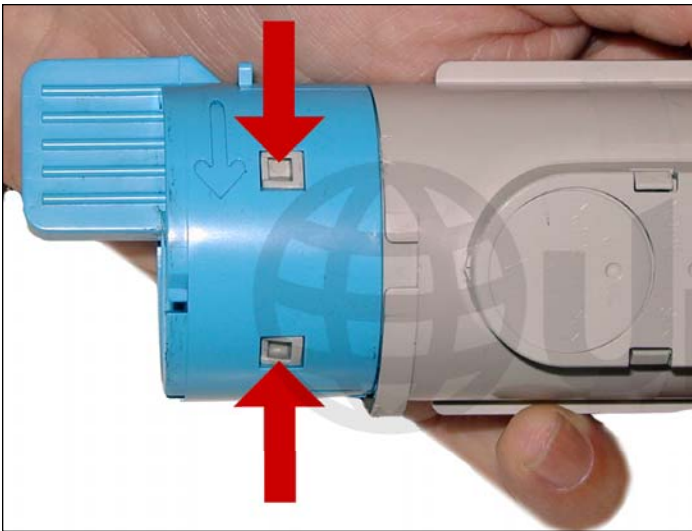


10. Replace the chip by prying the entire assembly up from the bottom. Install the new chip.



DELL 5100CN

The Dell 5100CN series toner cartridges are rated for 9,000 pages at 5% coverage. The OEM part numbers are the 310-5807 Black, 310-5810 Cyan, 310-5809 Magenta, and 310-5808 Yellow. There is a chip on the cartridge that must be replaced each cycle. These cartridges have developer mixed with the toner. New replacement toner has the developer pre-mixed.



1. Carefully pry off the colored end cap by lifting up on the plastic around the tabs.



2. Remove the end cap.



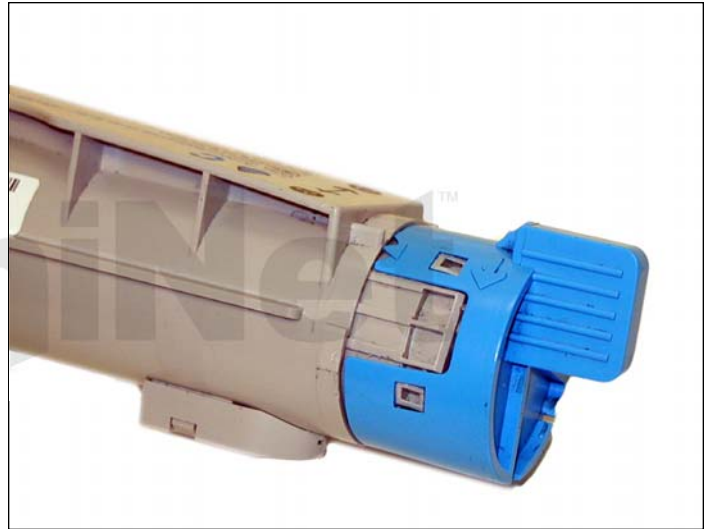
3. Very carefully pry out the fill plug
It is very soft and easily damaged!

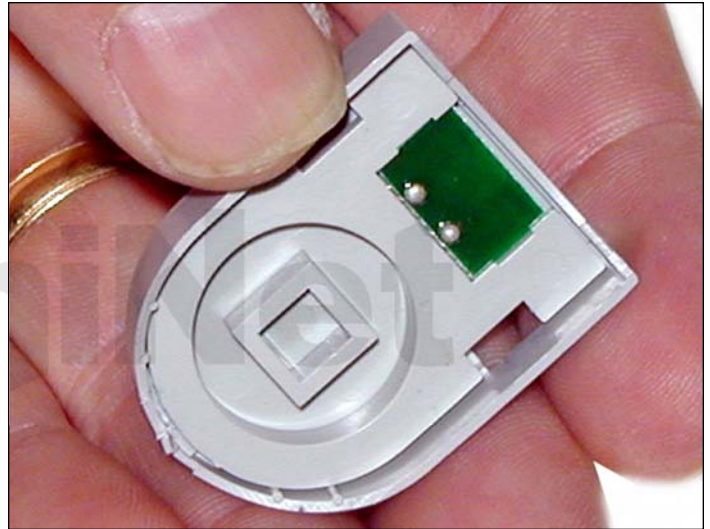
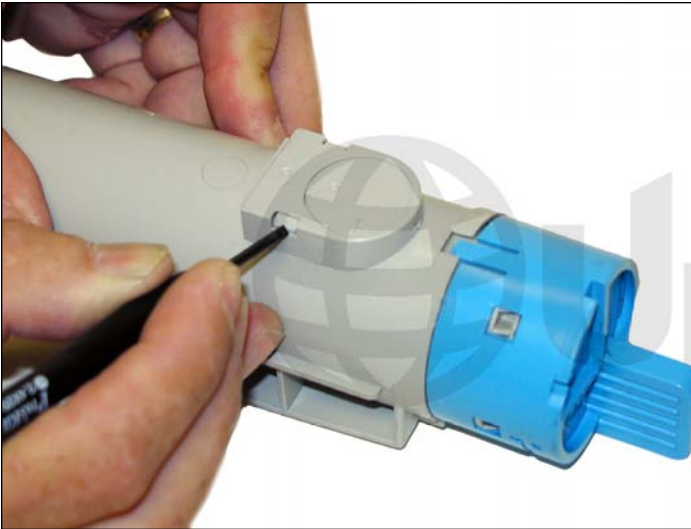


4. Remove all the old toner and fill with new Dell 5100CN toner.



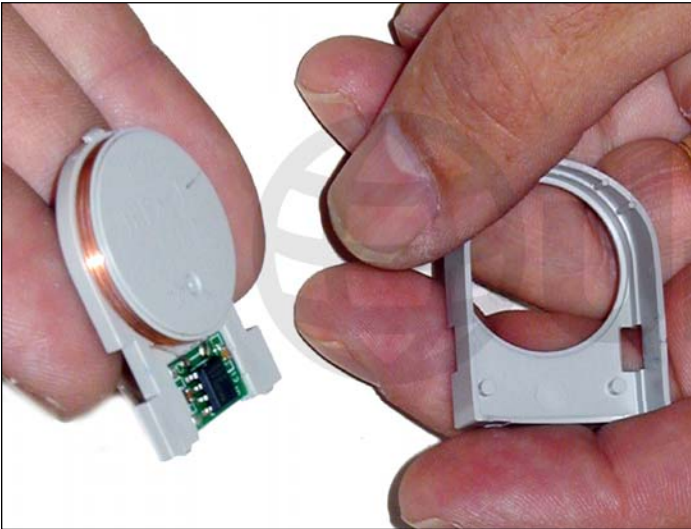
5. Replace the fill plug and end cap.





6. Press in on the tabs of the chip holder.

Remove it from the cartridge.



7. Separate the chip from the holder

Replace the chip.

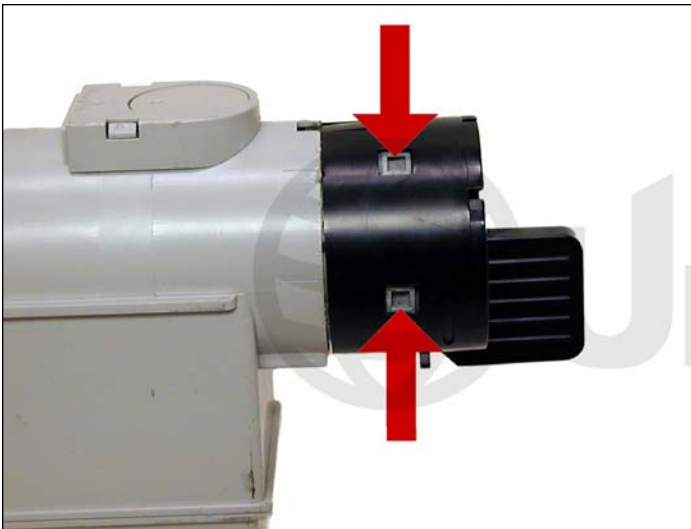


8. Snap the chip holder back on the cartridge.



DELL 5110CN

The Dell 5110CN series toner cartridges are rated for 10,000 or 18,000 pages at 5% coverage. The OEM part numbers are the 310-7889 (Black 18K), 310-7890 (Black 10K), 310-7892 (Cyan 8K), 310-7891 (Cyan 12K), 310-7894 (Magenta 8K), 310-7893 (Magenta 12K), 310-7896 (Yellow 8K), and 310-7895 (Yellow 12K). The high capacity cartridges have a large rectangular hopper molded to the tube. There is a chip on the cartridge that must be replaced each cycle. These cartridges have developer mixed with the toner. New replacement toner has the developer pre-mixed.



1. Carefully pry off the colored end cap by lifting up on the plastic around the tabs.



2. Remove the end cap.



3. Very carefully pry out the fill plug.

The plug is very soft and easily damaged!

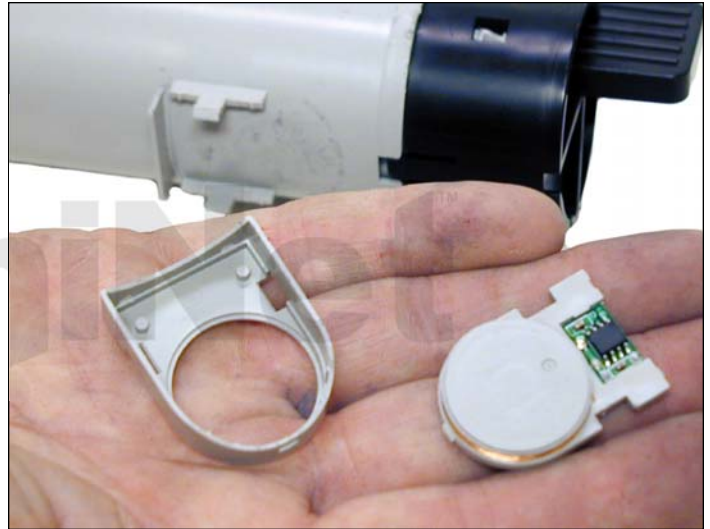


4. Remove all the old toner.

Fill with new Dell 5110CN toner.



5. Replace the fill plug and end cap.



6. Press in on the tabs of the chip holder.

Remove it from the cartridge.



7. Separate the chip from the holder and replace the chip.



8. Snap the chip holder back on the cartridge.



KYOCERA TK-112

The Kyocera TK-112 series toner cartridges are used in the FS-720, 820 and the 1016. They are rated for 6,000 pages at 5% coverage. There are also the TK-112E and TK-110 cartridges that are sold in Europe (3,000 and 6,000 pages respectively). There is no chip on the cartridge.



1. Remove the fill plug.

Clean out all the remaining toner.



2. Make sure the toner port is closed.

Fill with the TK-112 toner.



3. Re-install the fill plug.



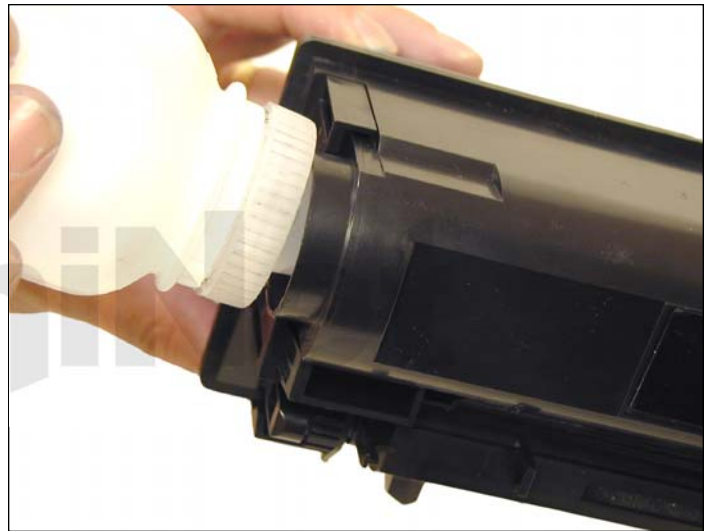
KYOCERA TK-332

The Kyocera TK-332 series toner cartridges are used in the FS-4000. They are rated for 20,000 pages at 5% coverage. The toner cartridge sells with a waste toner bottle and a corona grid cleaner. There is a chip on the cartridge that must be replaced each cycle. The printer ships with starter toner cartridge rated at 10,000 pages. The supplies used in this cartridge are also compatible with the following toner cartridges: FS-2000 OEM TK-312 USA and TK-310 Europe rated at 12,000 pages, FS 3900 OEM TK-322 USA and TK-320 Europe rated at 15,000 pages, and FS 4000 OEM TK-332 USA / TK-330 Europe rated at 20,000 pages.



1. Remove the fill plug.

Clean out all the remaining toner.



2. Make sure the toner port is closed.

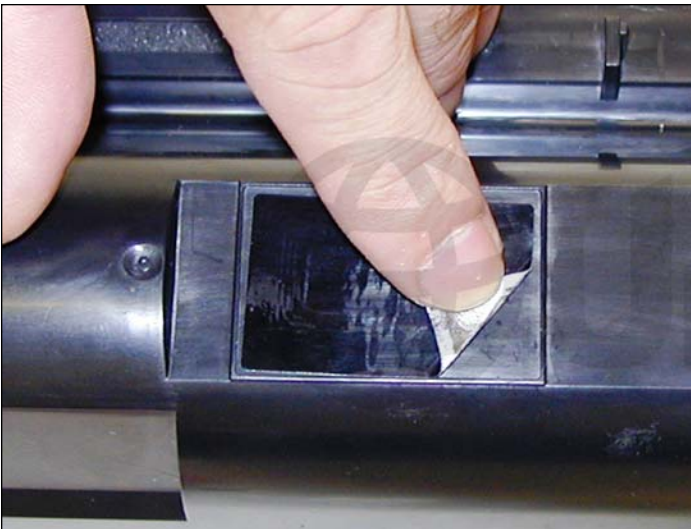
Fill with the TK-332 toner.



3. Re-install the fill plug.



4. Clean out or replace the waste bottle.



5. Replace the RF type chip (the chip is manufactured into the label).



OKIDATA B2200

The Okidata B2200 toner cartridges are used in the B-2200 and B-2400 machines. They are rated for 2,000 pages at 5% coverage. There is a chip on the cartridge that must be replaced each cycle. The OEM cartridge part number is 4364030.



1. Turn the blue handle so that the toner port is open.

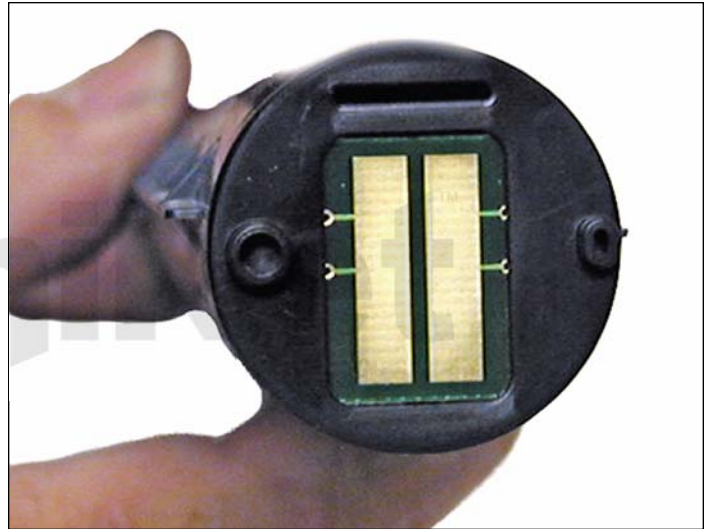


2. Fill the hopper with B2200 toner.

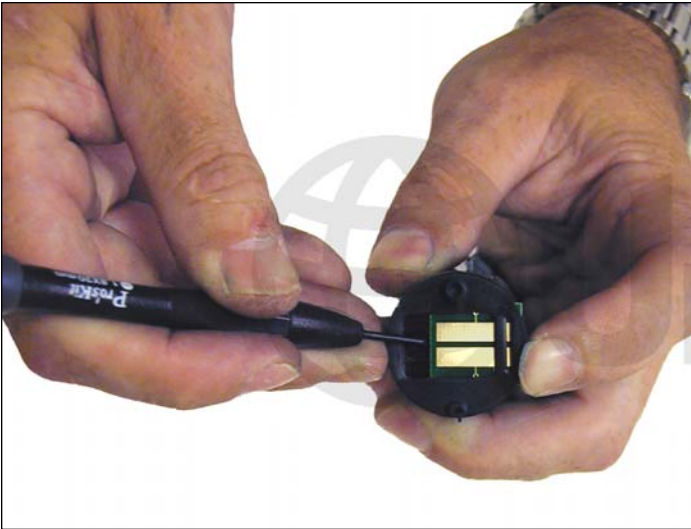
Clean out all remaining toner.



3. Carefully turn the blue handle so the toner port is closed.



4. Locate the chip on the side of the tube opposite the blue handle

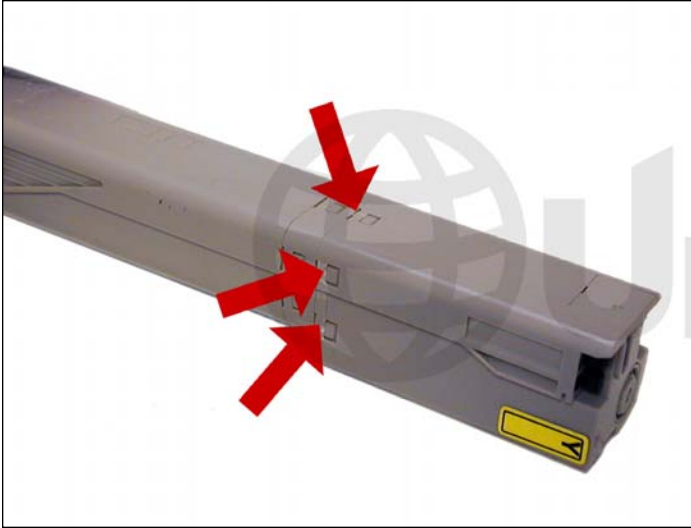


5. While pulling out on the top of the chip holder, slide the chip out with a small screwdriver. Replace the chip.



OKIDATA C3400

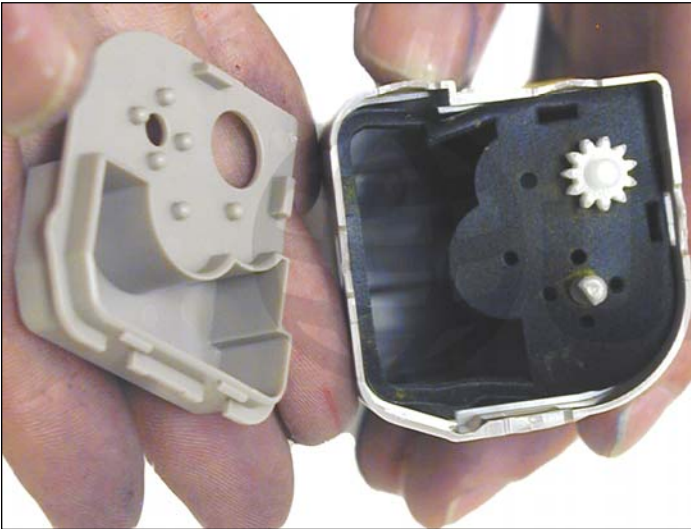
The Okidata C3400/3530 toner cartridges are rated for 2,500 pages black and 2,000 pages color at 5%. The OEM part number is 43459304 Black, 43459303 Cyan, 43459302 Magenta, and 43459301 Yellow. There are also a 1,500 page black and 1,000 page color cartridges: OEM 43459404 Black, 43459403 Cyan, 43459402 Magenta and 43459401 Yellow. There is a chip on these cartridges that must be replaced each cycle.



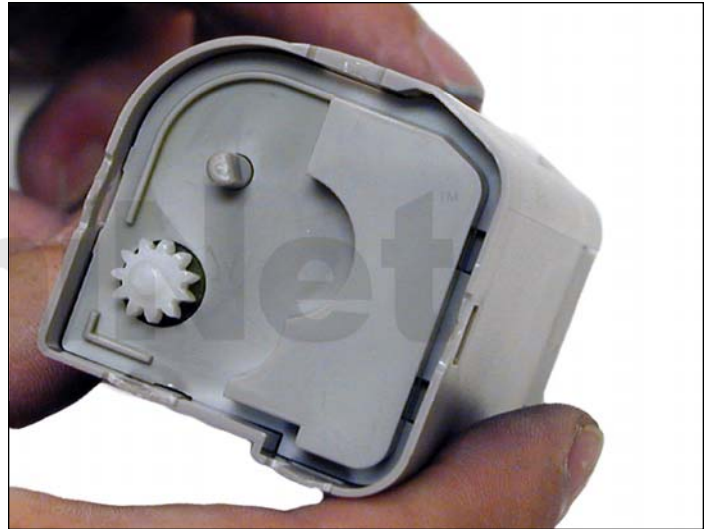
1. Press in on the tabs in the center section as shown.



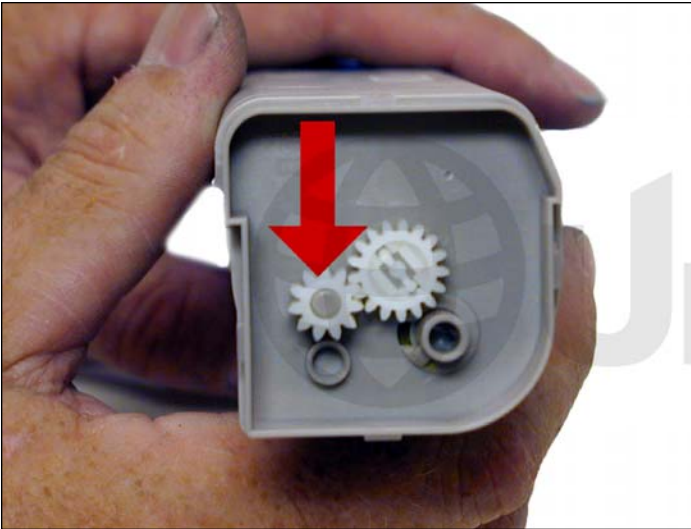
2. Separate the two halves.



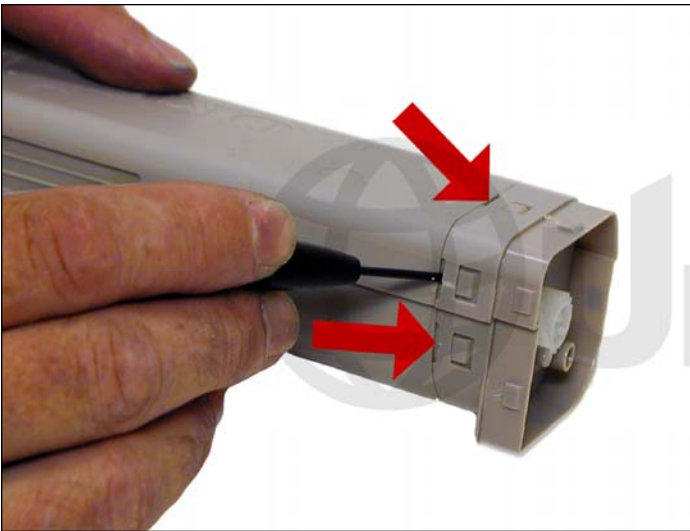
3. Remove the shield from the waste chamber.



4. Clean out all the old toner and replace the shield.

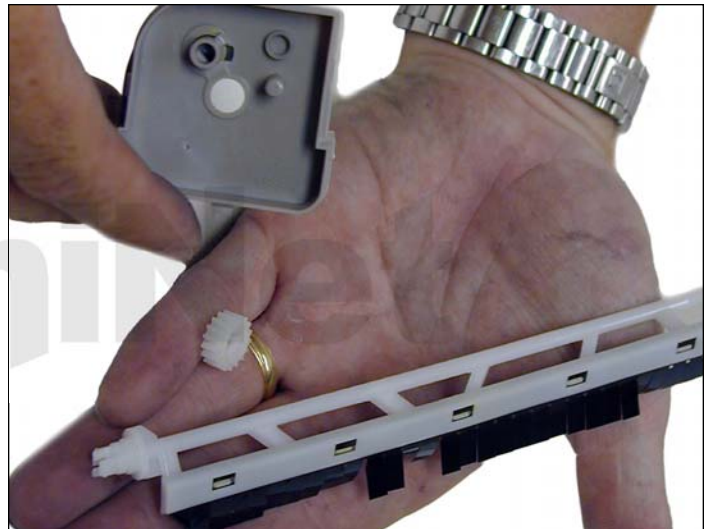
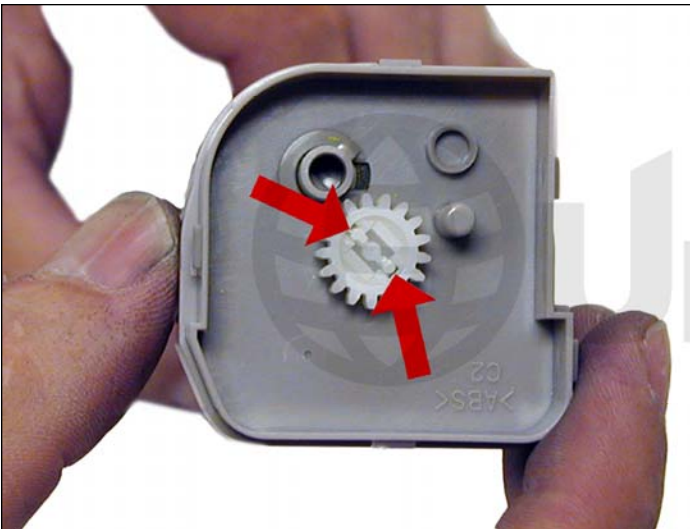


5. On the supply section, remove the small gear.



6. Remove the center section by pressing in on the tabs.

Clean out any remaining toner.



7. Squeeze the locking teeth on the drive gear.

Remove the gear.



8. Hold the mixing auger centered and insert into the center section.



9. Add the new toner to the hopper.



10. Replace the center section into the supply section and snap the drive gear in place. Replace the smaller gear.



11. Snap on the waste chamber.



12. Slide the chip cover off the cartridge and replace the chip.



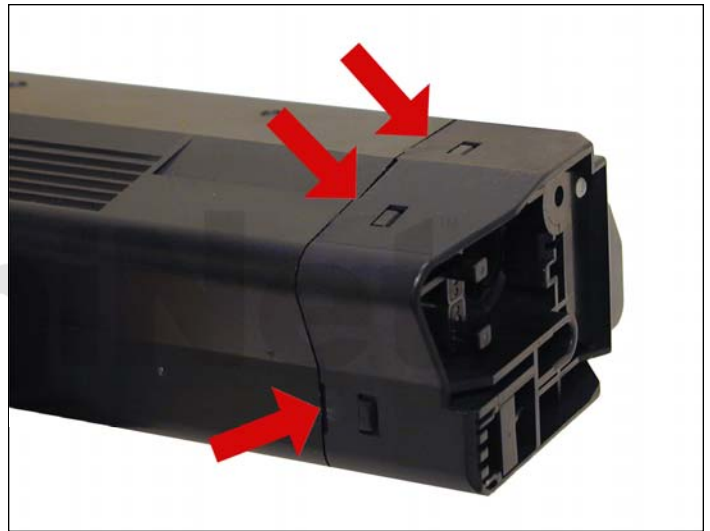
OKIDATA C5100

The Okidata C5100 series of toner tubes are rated for 5,000 pages at 5% coverage. They are compatible with the C5000, 5100, 5150, 5200, 5250, 5300, 5400, 5450, MFP 5510, 5250 and 5540. The OEM part numbers are 42127404 Black, 42127403 Cyan, 42127402 Magenta, and 42127401 Yellow. There is no chip on the cartridge.



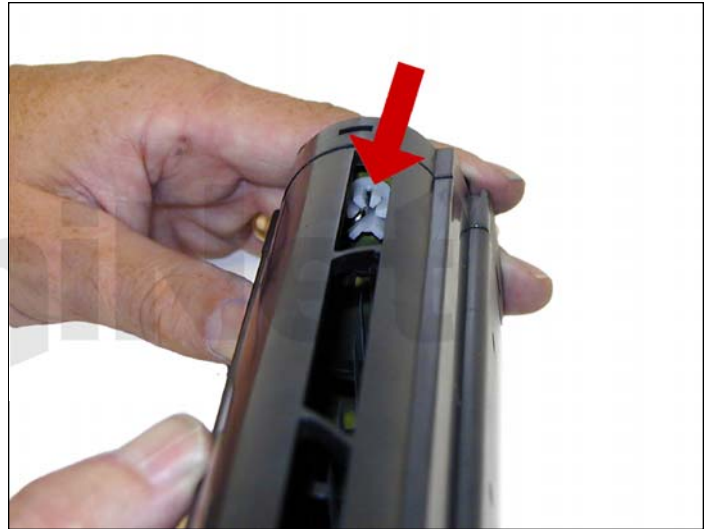
1. Remove the fill plug from the blue handle.

Clean out the old toner from the cartridge.



2. Press in on the tabs on the opposite side of the cartridge.

Remove the end cap and remove all the remaining toner.



3. Open the toner port, and snap the end cap back in place.

As you press the end cap on, watch through the port to make sure the mixing auger fits into the drive gear.

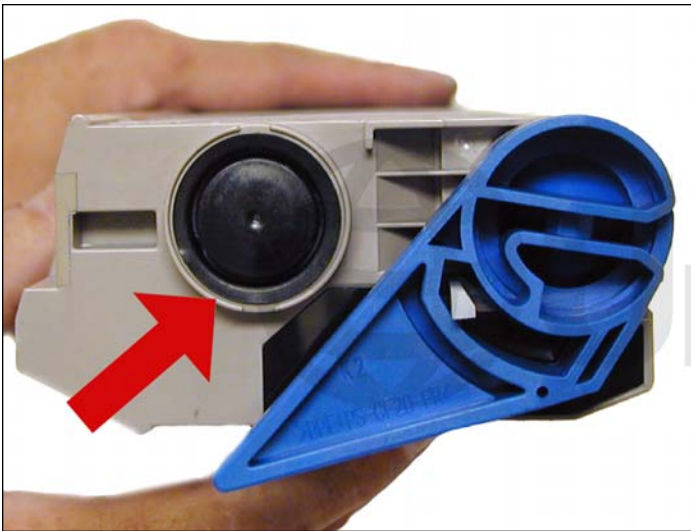


4. Close the port, fill with new toner, and replace the fill plug.



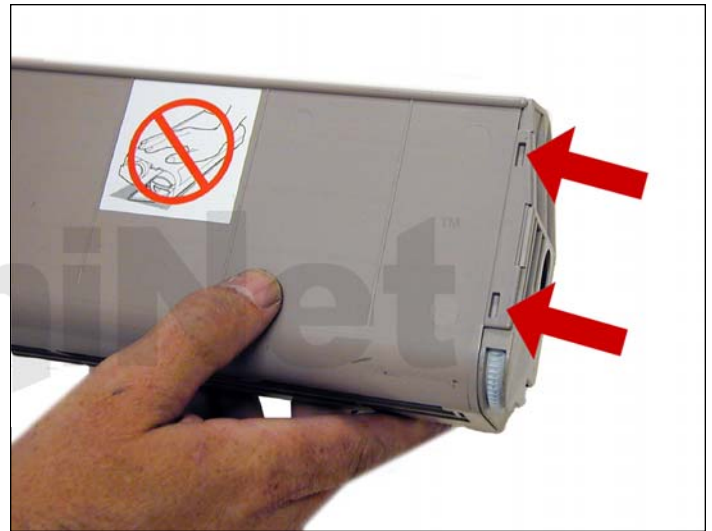
OKIDATA C7300

The Okidata C7300 series toner cartridges are rated for 10,000 pages black at 5% coverage. They are compatible with the C7000, 7100, 7200, 7300, 7400, and C7500 machines. The OEM part numbers are the 41963004 Black, 41963003 Cyan, 41963002 Magenta, and 41963001 Yellow. There is no chip on the cartridge.



1. Remove the fill plug from the side of the cartridge.

Clean out the old toner from the cartridge.



2. Press in on the tabs on the opposite side of the cartridge.

Remove the end cap and remove all the remaining toner.



3. Start to snap the end cap back in place. As you press the end cap on, watch to make sure the mixing auger fits into the bushing and metal rod fit into their proper places.



4. Close the port.

Fill with new toner and replace the fill plug.

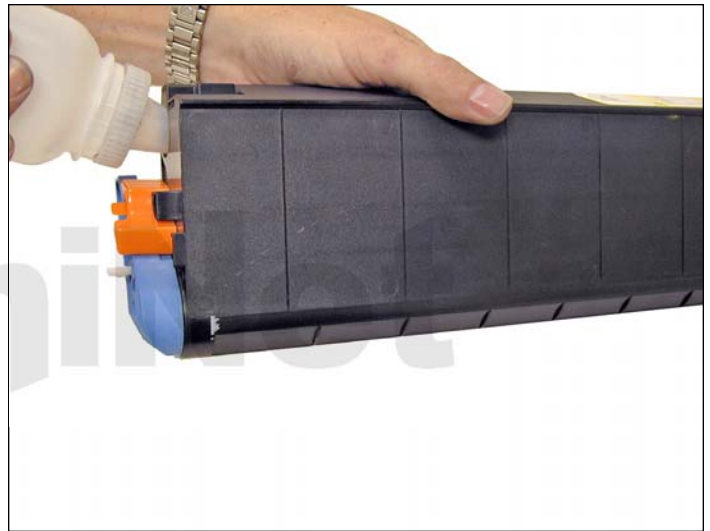


OKIDATA C9300

The Okidata C9300 series toner cartridges are rated for 15,000 pages at 5% coverage. They are compatible with the C9000, 9100, 9200, 9300 and C9500 machines. The OEM part numbers are the 41963604 Black, 41963603 Cyan, 41963603 Magenta, and 41963601 Yellow. There is no chip on the cartridge.



1. Remove the fill plug and clean out all remaining toner.



2. Make sure the toner port is closed before refilling.

Fill with the appropriate color toner.



3. Replace the fill plug.



OKIDATA C9600

The Okidata C9600 series toner cartridges are rated for 15,000 pages at 5% coverage. They are compatible with the C9600 and C9800 machines. The OEM part numbers are the 42918904 Black, 42918903 Cyan, 42918902 Magenta, and 42918901 Yellow. There is a chip on the cartridge that must be replaced each cycle.



1. On the side opposite the blue handle, press in on the tabs of the end cap. Remove the end cap.

Remove all the old toner from the hopper.



2. Fill with new Okidata C9600 toner.



3. Replace the end cap.



4. Peel up the colored label.



5. Remove the chip cover, replace the chip.



6. Replace the chip cover and label.



PANASONIC KX-FA85

The Panasonic KX-FA85 toner cartridge is used in the KX-FLB801, 811, and 851 machines.

It is rated for 5,000 pages at 5% coverage. There is no chip on the cartridge.



1. Turn the side center part of the tube to open the toner port.



2. Clean out all the remaining toner.

Fill with new KX-FA85 toner.

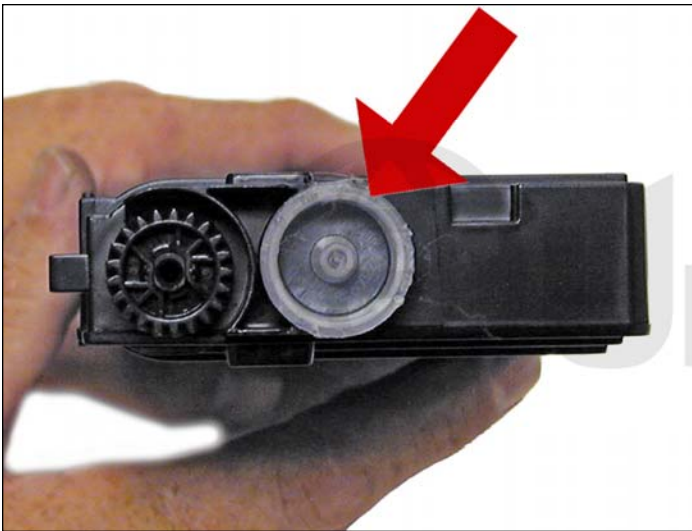


3. Close the toner port.

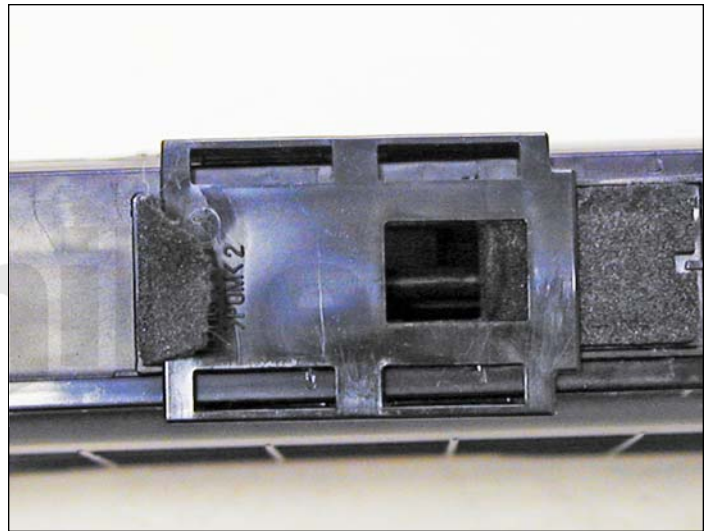


RICOH CL-3500 (TYPE 165)

The Type 165 cartridges are rated for 7,000 pages Black and 6,000 pages color at 5% coverage. The OEM part numbers are 402552 Black, 402553 Cyan, 402553 Magenta, and 402555 Yellow. There is no chip on this cartridge.



1. Remove the fill plug.



2. Open the toner port and vacuum the cartridge clean.



3. Close the port and fill with CL-3500 toner.



4. Replace the fill plug.



RICOH CL-4000 (TYPE 145)

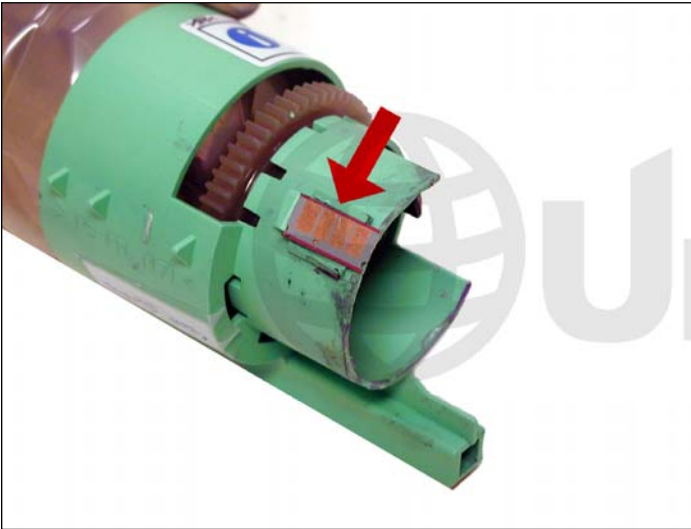
The Type 145 cartridges are rated for 15,000 pages at 5% coverage. The OEM numbers are 8888308 Black, 8888311 Cyan, 8888310 Magenta, and 8888309 Yellow. There is a chip that needs to be replaced each cycle.



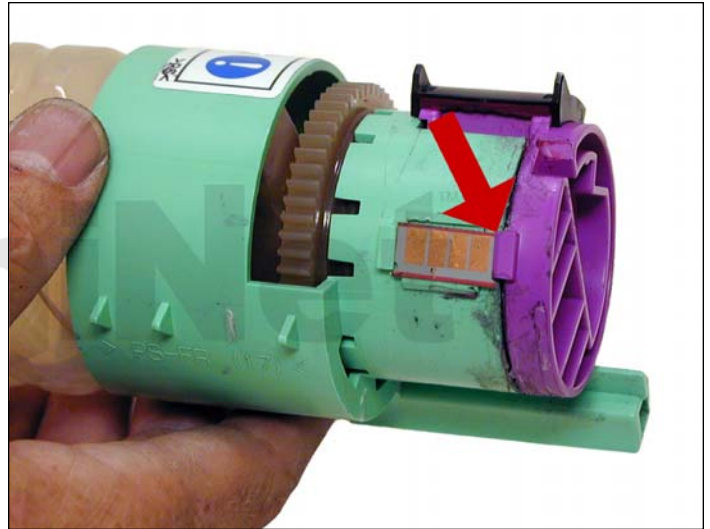
1. Carefully pry off the colored end cap from the end of the tube.



2. Vacuum out all the old toner and replace with new.



3. Replace the chip on the tube housing. Clean up the glue on the end of the tube with a cotton swab and alcohol.



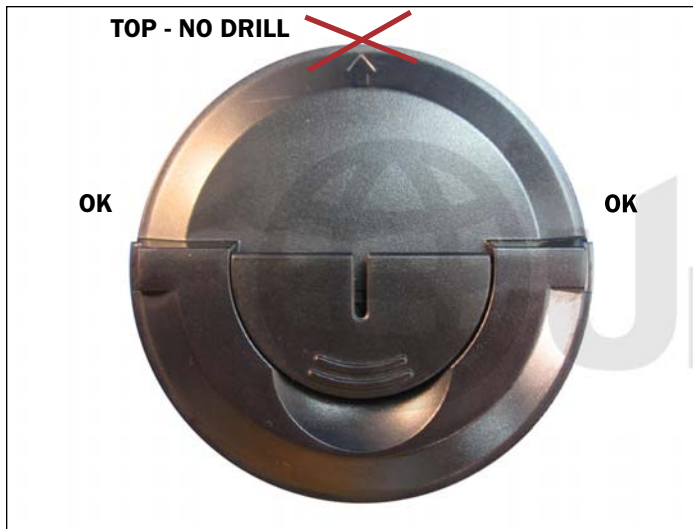
4. Insert the end cap onto the tube.

Place clear tape along the seam of the end cap if necessary.



SAMSUNG CLP-300

The cartridges are rated for 2,000 pages Black and 1000 pages Color. The OEM cartridge part numbers are CLP-K300A Black, CLP-C300A Cyan, CLP-M300A Magenta and CLP-Y300A Yellow. There is a chip that has to be replaced each cycle, and the cartridge itself has to be modified in order to refill it.



1. In order to clean and fill the cartridge, a hole must be drilled or melted into the cartridge. The hole cannot be placed at the top of the cartridge as that will cause cartridge problems.



2. The hole can be drilled with a 1/2" drill bit or melted with a soldering iron. If it is drilled, great care must be taken to get all the shavings out. If it is melted, the outer edge of the hole has to be shaved flat with a razor blade. Clean out all the remaining toner/shavings thoroughly.



3. Insert a small funnel into the hole.

Fill with new CLP-300 toner.

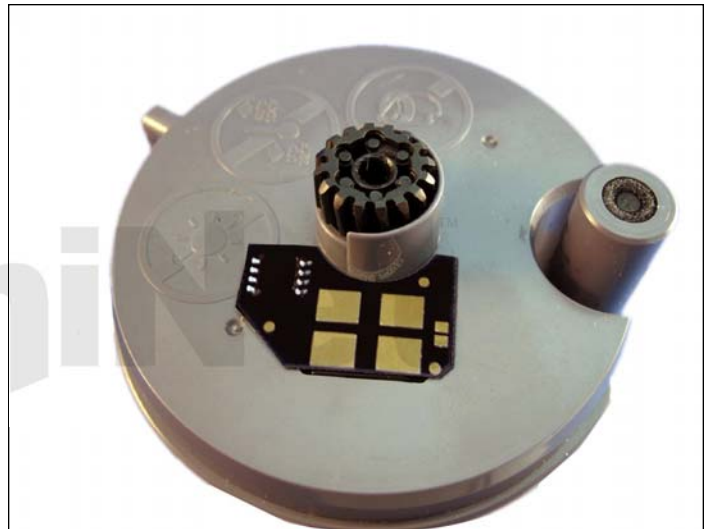


4. Cover the hole using a small piece of tape. Make sure the seal is tight and that there are no leaks. Also make sure the tape/label does not extend to the top of the cartridge as it is installed, this area has a very tight fit and the seal may be torn off as the cartridge is installed.



5. The OEM chip is not removed. A new chip is placed over it.

Peel off the adhesive backing on the chip and place it over the OEM.





XEROX PHASER 6250

The Xerox Phaser 6250 series toner cartridges are rated for 8,000 or 4,000 pages at 5% coverage. The OEM part numbers are the 106R00675 Black (8K), 106R00671 Black (4K), 106R00672 Cyan (8K), 106R00668 Cyan (4K), 106R00673 Magenta (8K), 106R00669 Magenta (4K), 106R00674 Yellow (8K), and 106R00670 Yellow (4K). The low yield cartridges can be made into high yield by using the correct load of toner/developer and the correct chip. There is a chip on the cartridge that must be replaced each cycle. These cartridges have developer mixed with the toner. New replacement toner must have the developer mixed in before installing in the cartridge.



1. Carefully pry off the colored end cap by lifting up on the plastic around the tabs.

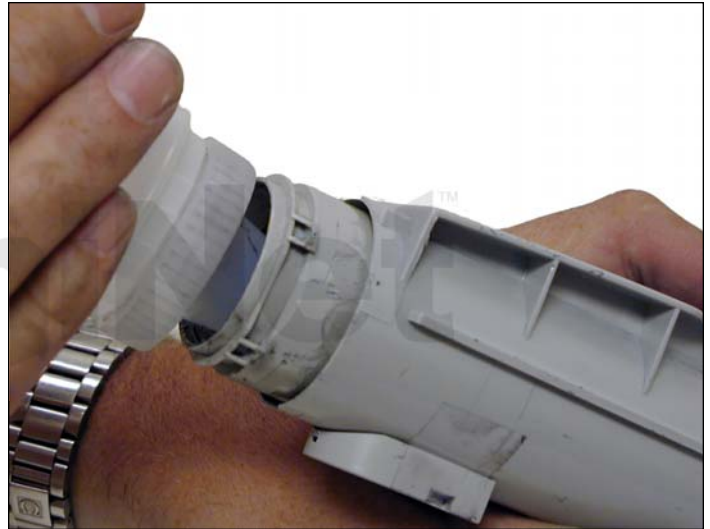


2. Remove the end cap.



3. Carefully pry out the fill plug. Be very careful doing this.

The plug is very soft, and easily damaged!

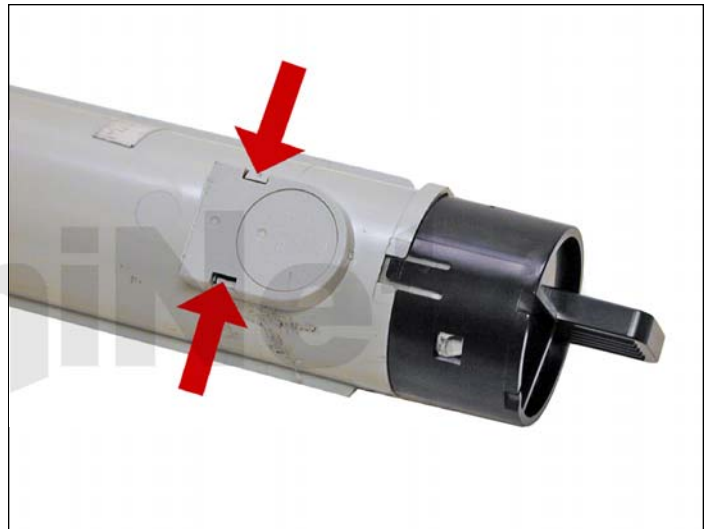


4. Remove all the old toner and clean cartridge thoroughly.

Fill with new Phaser 6250 toner.



5. Replace the fill plug and end cap.



6. Press in on the tabs of the chip holder.

Remove it from the cartridge.



7. Separate the chip from the holder.

Replace the chip.



8. Snap the chip holder back on the cartridge.



XEROX PHASER 7700

The Xerox Phaser 7700 toner cartridges are rated for 5,000 / 12,000 pages black and 4,000 / 10,000 pages color. The OEM part numbers are 016-1882-00 Black (5K), 016-1947-00 Black (12K), 016-1879-00 Cyan (4K), 016-1944-00 Cyan (10K), 016-1880-00 Magenta (4K), 016-1945-00 Magenta (10K), 016-1881-00 Yellow (4K), and 016-1946-00 Yellow (10K). Use two bottles for the HY cartridges. There are no chips used in this cartridge.



1. Remove the tape from the colored end cap.



2. Remove the end cap.



3. Vacuum the tube clean, and fill with new toner.



4. Replace the end cap, replace the tape.